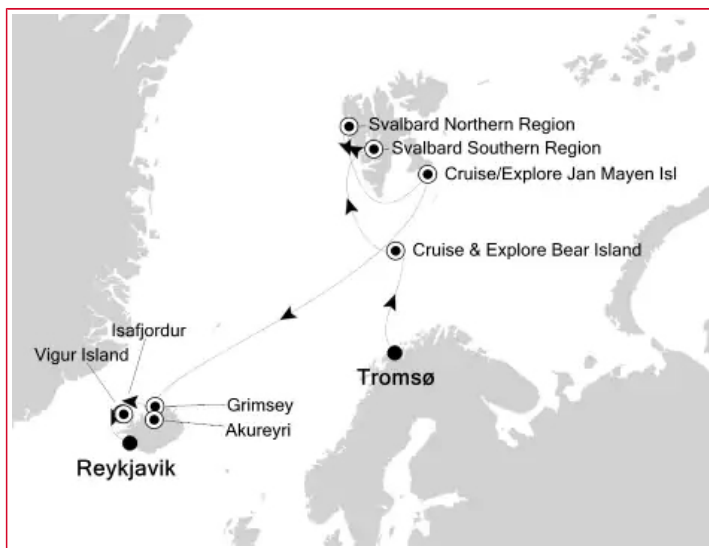


TROMSØ to REYKJAVIK

Who has not dreamed of the land of the midnight sun? Travel to places seen by famous polar explorers such as Andrée, Nordenskjöld, Amundsen and Nobile for a journey like no other. Search the Spitsbergen pack ice for the elusive Polar Bear in Zodiacs®, observe huge colonies of seabirds and enjoy the coastal culture, and perhaps a local beer, in the outstanding beauty of Iceland.



DURATION

12

DAYS

DEPARTURE

JUL 27

2018

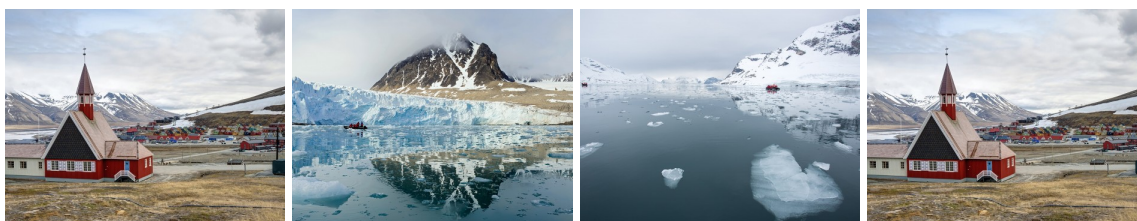
FARES FROM (PER GUEST)

US \$10,500

Fares shown are per guest and subject to changes

EXPEDITION CRUISE ITINERARY

An expedition with Silversea is unlike any other form of travel – thrilling, awe-inspiring and humbling all at the same time. Below please find itinerary information about this adventurous expedition.



DATE	DAY-BY-DAY	ARRIVE / DEPART
Friday - Day 1	Tromsø, Norway	4:30PM
Saturday - Day 2	Cruise & Explore Bearland	2:00 PM / 9:30PM
Sunday - Monday - Day 3 - 4	Svalbard Southern Region	12:30 PM
Tuesday - Thursday - Day 5 - 7	Svalbard Northern Region	05:00 PM
Friday Day 8	Day at Sea	
Saturday - Day 9	Cruise / Explore Jan Mayen Isl., Norway	7:00AM / 12:00PM

See following page for the rest of the itineraries ➤

* One hour free WIFI per day for all guests. Unlimited free WIFI for guests sailing on select suite categories

◀ Itineraries continued from previous page

DATE	DAY-BY-DAY	ARRIVE / DEPART
Sunday - Day 10 Monday - Day 11	Grimsey , Iceland Akureyri , Iceland	12:00PM / 11:00PM 7:00AM / 5:00PM
Wednesday - Day 13	Reykjavik	9:30 AM

* One hour free WIFI per day for all guests. Unlimited free WIFI for guests sailing on select suite categories

SUITES AND FARES

Silversea Expeditions' oceanview suites are some of the most spacious in luxury expedition cruising, and all include the services of a butler. Select your suite and Request a Quote - guests who book early are rewarded with the best fares and ability to select their desired suite.



CATEGORY	DIMENSIONS	FARES FROM (PER GUEST)
OWNERS SUITE	827 ft ² / 77 m ² incl. veranda (Veranda: 89 ft ² / 8 m ²)	US \$39,600
GRAND SUITE	618 ft ² / 57m ² including a private balcony	US \$37,600
SILVER SUITE	422 ft ² / 39m ² including 2 French balconies	US \$25,100
MEDALLION SUITE	400 ft ² / 37m ² including a private balcony	US \$23,100
DELUXE VERANDA SUITE	295 ft ² / 27 m ² including veranda (Veranda 49 ft ² / 4,5 m ²)	US \$13,800
VERANDA SUITE	206-216 ft ² / 19-20m ² including a French balcony	US \$13,200
VISTA SUITE	192 ft ² / 18m ² with large picture window	US \$10,500

INCLUDED IN THE CRUISE FARE

- Highly qualified expedition team with experts in their field (marine biologists, ornithologists, historians and more)
- Excursions and activities, including explorations by Zodiac®
- Complimentary expedition gear: backpack and water bottle on every voyage, Haglöfs parka for polar expeditions
- Comfortable amenities with the largest expedition suites at sea
- Inclusive room-service, select wines, spirits and soft drinks throughout the ship
- Free WIFI* throughout the ship
- Onboard Gratuities
- Exclusive partnership with The Royal Geographical Society

- Personalised service with a butler for all suites and the highest crew to guest ratio in the industry
- Fine dining even in the most remote places of the planet

SILVER CLOUD EXPEDITION



After extensive refurbishment, Silver Cloud will be the most spacious and comfortable ice class vessel in expedition cruising. Her large suites, her destination itineraries and her unparalleled service make her truly special. Her five dining options will tantalise your taste buds and as 80% of her suites include a veranda, watching a breaching whale or a few cavorting penguins has never been so personal. Broad sweeping decks with multiple open spaces and a swimming pool complete what is surely the most distinctive expedition ship sailing today.

A limited number of suites, particularly with just 200 in polar waters, mean that Silver Cloud has the highest space to guest and crew to guest ratios in expedition cruising. With her 18 zodiacs, possibilities are almost limitless with ship-wide simultaneous explorations. Finally, a team of 19 passionate and dedicated experts are always at hand to ensure your voyage is enhanced every step of the way.

GUESTS: 200/248
Meters

CREW: 208

LENGTH: 514.14 Feet / 156.7

VOYAGE HIGHLIGHTS

Your expedition will lead to one discovery after another. A complimentary programme of unique, small-group shore experiences, led by our team of expert guides and lecturers, allows you to fully experience the lands you'll visit.

Tromso to Reykjavik| 12 Days

Join us for a journey into one of the last major European wilderness areas with pristine mountains, fauna, deep fjords, picturesque icebergs, and massive ice sheets. Our goal on this voyage is to explore the eastern and least-visited sections of Svalbard's breathtaking and dramatic Spitsbergen. Once there, we will locate wildlife and spend the maximum amount of time possible hiking on the tundra. Svalbard is home to approximately 3,000 polar bears and we hope to encounter a good number of them during our voyage.

Expedition Highlights:

- Cruise amidst pristine landscapes of glaciers and icebergs
- Explore deep fjords lined with rugged mountains
- Search for polar bear, walrus, reindeer, Arctic fox, and bearded seal

- Watch for whales including Minke and beluga
- Trek along the tundra
- Observe birds such as eiders, terns, skuas, sandpipers, auks and puffins
- Enjoy Zodiac cruises along remote bird cliffs
- Discover ruins of long-defunct whaling operations

Day 1 - Tromsø, Norway

Embark *Silver Cloud* for your exciting 12-day Silversea Expedition - To the Land of Fire and Ice. You will be introduced to your Expedition Team and attend a Zodiac briefing as well as an Arctic regulations refresher course that outlines the environmental policies we must all adhere to in order to enjoy the privilege of visiting this pristine region at the top of the world. Tonight we invite you to familiarise yourself with the elegant Silver Cloud, meet some of your fellow travellers and enjoy the first of many memorable meals in one of the restaurants.

Day 2 - Bear Island (Bjørnøya), Norway

As we near the southern tip of this arctic island, now a nature reserve, we will see thousands of seabirds diving into and out of the island's steep cliffs. With our Zodiacs and favourable weather conditions, we will explore the rugged coastline. Close to 9 kilometres of cliffs are home to some of the largest bird colonies of the Northern Hemisphere. Common Guillemots, Brünnich's Guillemots, Black-legged Kittiwakes, Northern Fulmars, and Glaucous Gulls are all found along the cliff. Other species have been observed, including puffins and even gannets. Of the more than 120 species registered, slightly more than 30 actually breed on the island. The Expedition Team will provide insights into the environment, the terrain, and the wildlife that exist in these extreme conditions. Leaving Bear Island head out on deck to watch for whales, white-beaked dolphins and minke whales are known to frequent the area.

Days 3-7 - Cruise & Explore Svalbard

We will travel along the same routes as famous polar explorers such as Andrée, Nordenskjöld, Amundsen and Nobile. We will visit walrus haul-outs, might see reindeer, and maybe even spot the Arctic fox or bearded seal. Northern Fulmars will be our constant companions. We might even encounter a few whales. Several species frequent the area, in particular Minke and beluga.

Our flexible itinerary allows us to take advantage of favourable ice and weather conditions. Whether cruising by Zodiac amongst ice floes and icebergs or heading ashore for a guided walk, our adventures will bring us up close to mystical settings. Each day our Expedition Leader and Captain will determine our best course depending on changing weather, ice conditions and the wildlife we encounter. Here are a few of the places we hope to visit:

-Hornsund - This is the southernmost fjord on the rugged west coast of Spitsbergen Island. Jagged mountain peaks tower above glacier-filled bays. Amidst floating icebergs, we will watch for bearded seals, the beluga whale and the king of the Arctic - the polar bear. Sightings are fairly common as the polar bear's favourite food, the ringed seal, breeds in the fjord. The surrounding bird cliffs are home to thousands of pairs of nesting Little Auks. We may visit the remains of whaling stations and trappers' huts.

-Fjortende Julibreen - The 14th of July Bay is located at the entrance of Krossfjorden. Here we will go ashore for a hike up to the 14th of July Glacier -conditions permitting, we will climb onto the glacier, or, alternatively walk to the Hanging Gardens, a beautiful plant oasis underneath a bird cliff.

-Ice Cruising - With the strengthened hull of the Silver Cloud, we have the perfect platform to search for walrus and polar bears as we devote at least one day to exploring the pack ice north of Spitsbergen. Conditions permitting, our Expedition Leader may choose to take us out in the Zodiacs for an even closer look.

-Liefdefjorden - At the entrance to Liefdefjorden are several small island groups. On the Andøyane (Duck Islands) we may encounter polar bears looking for bird's eggs. With our Zodiacs we might circumnavigate several of the islands, always on the lookout for active birdlife -when Arctic Terns circle specific areas it usually is a sign for polar bear presence on the islands.

-Magdalenefjorden - Found on Spitsbergen's northwest coast, Magdalenefjorden was already seen by Willem Barents in 1596. Walrus was hunted here in later days and a whaling station was set up. The remains of blubber ovens and a cemetery can still be seen. Silver Cloud will enter this scenic fjord in Northwest Spitsbergen National Park and we might land at Graveneset for a short walk.

-Monacobreen - Cruising past majestic red Devonian sandstone mountains we will reach the end of Liefdefjorden for a Zodiac cruise along the front of two different glaciers: Monacobreen and Seligerbreen. Monacobreen has a 5 kilometre long front and is a good place to look for seals, Black-legged Kittiwakes and Ivory Gulls.

Day 8 - Cruising the Greenland Sea

Our Expedition Team members will recap our experiences in Svalbard in the Lecture Theatre and will prepare you for the island of Jan Mayen. Other onboard diversions include spa treatments, a workout in the Fitness Centre, and, of course, exquisite dining experiences.

Day 9 - Jan Mayen, Norway

During the morning we intend to go ashore close to the Norwegian Meteorological Station. Apart from a nature walk leading up to the long black sandy beach on the eastern shore, we will enter the station in small groups and will hear about the work this remote outpost is conducting.

In the afternoon we continue sailing south. As we make our way toward Iceland, head out on deck to watch for seabirds and whales. When not attending an informative lecture, take some time to peruse the well-stocked Library, enjoy a fine cognac in the Connoisseur's Corner or indulge in any of the other special amenities offered aboard ship.

Day 10 - Grimsey, Iceland

Just off the north coast of Iceland -and slightly above the Arctic Circle- is Iceland's northernmost inhabited island. The island is small enough (only 5.3 km²) to be explored on foot and you are bound to meet one of the seventy hardy souls that make this island their home. The island's sheer cliffs are home to huge seabird colonies, mainly Atlantic Puffins, Black-legged Kittiwakes, Northern Fulmars, Razorbills, and Common and Brünnich's Guillemots. Still today the islanders abseil down the cliffs to collect bird eggs. You will have the opportunity to visit with islanders to get a first-hand impression of life on Grimsey.

Day 11 - Akureyri, Iceland

As we reach the mainland, we will get the choice of three different glimpses of Iceland: you can either focus on coastal culture, the beautiful seaside surroundings and visiting small fishing villages and the award-winning Siglufjörður Herring Museum, Iceland's largest maritime museum, or you could instead look at the countryside culture, visiting small countryside churches, an Icelandic farm and seeing how life is when it is largely based on traditional livestock raising. The third choice would be to taste local delicacies on the mainland and on the small island of Hrísey. You will taste fresh and salted cod and get to see Iceland's first micro-brewery -and of course can taste the local beer.

Day 12 — Isafjordur and Vigur Island, Iceland

Isafjordur has a well-preserved town centre from the 19th century and you can accompany a local guide dressed in 19th century clothing to see and hear what makes this place so special. You could also drive to Sudavik and the largest fjord of the Westfjords. The Arctic Fox Centre, a research centre, museum and coffee shop in one, is located there and you will have Icelandic live music at Sudavik's beautiful and history-charged church. For those interested in horse-back riding, a small number of Icelandic ponies will be there to take you through the Sandar Valley, a 40-minute drive from Isafjordur. If you would like to taste some local food, choose the Sudureyri Food Trail –you will visit the eco-conscious fishing village of Sudureyri and while walking the town you will meet the locals and will be offered local produce and delicacies (mainly fish) at various points of your walk –an intercultural experience you are unlikely to forget.

Silver Cloud will reposition during lunchtime and will reach the privately-owned Vigur Island. Here we will offer guided walks around the small island famous for its Eider Ducks and eider down harvesting, as well as the abundant amount of puffins and terns that call the island their home. At the end of the walk you can enjoy the hospitality of the family of ten residing on Vigur and have a cup of coffee or tea and taste the cakes and cookies specially prepared for you. In the evening you will have the opportunity to see the Voyage DVD which our onboard Photographer/Videographer has prepared, registering our adventures in the “Lands of Ice and Fire”.

Day 13 — Reykjavik, Iceland

Following breakfast, disembark *Silver Cloud*.

Expedition highlights and wildlife listed here are possible experiences only and cannot be guaranteed. Your Expedition Leader and Captain will work together to ensure opportunities for adventure and exploration are the best possible, taking into account the prevailing weather, wildlife activity and ice conditions. Expedition Team members scheduled for this voyage are subject to change or cancellation.

GEAR UP

Not sure what to wear while on board? Visit our shop www.SilverseaExpeditions.com/gearshop and gear up. We've got layers to keep you dry and warm, breezy wear to keep you covered and cool, and accessories to keep everything packed up and ready to go. So, no matter the weather, you'll be better prepared for your expedition.

Our Gear Shop has an expert outfitting staff and features all the essentials:

Clothes for all types of weather, boot rentals, accessories and more

Packing Lists

Complimentary Parka

Make sure you get all your essentials today. We offer packages or individual items, for your convenience, and recommend you place orders at least 30 days before your embarkation date.