



Antarctic Peninsula

Antarctica Express

26 Nov - 06 Dec 2018

11 days

Embarkation: Ushuaia (Argentina)

Disembarkation: Ushuaia (Argentina)

M/v Sea Spirit

Activities:



Itinerary



Day 1: Ushuaia, Argentina

Welcome to Ushuaia, the world's southernmost city and starting point of our expedition. Your hotel accommodation has been arranged by us and is included in the price of the voyage. For the rest of the day you are free to explore the city. Take advantage of souvenir shopping and a variety of dining options in the city center.



Day 2: Embarkation in Ushuaia

In the afternoon we provide a group transfer to the pier and welcome you aboard the luxury expedition ship M/V Sea Spirit. Explore the ship and get comfortable in your home away from home for the extraordinary adventure to come. Savor the anticipation of your Antarctic dreams coming true as we slip our moorings and sail toward a true wilderness where wildlife abounds. The scenery as we sail through the Beagle Channel on our first evening is wonderful and there is already the possibility of marine mammal encounters.



Day 3-4: Across the Drake Passage

After transiting the Beagle Channel and passing the islands of Tierra del Fuego, we head south across the Drake Passage. Pelagic seabirds including the majestic albatross are common in these waters and can readily be viewed from panoramic open decks or from exterior stateroom windows and balconies. On the way we cross the Antarctic Convergence, the biological boundary of the Southern Ocean. The ship's stabilizing fins provide comfort in the event of rough seas. Briefings, orientations, and lectures from our expert staff prepare you for our arrival in Antarctica.



Day 5-8: South Shetland Islands and the Antarctic Peninsula

This is expedition cruising at its most authentic. Our route and exploration opportunities in Antarctica are heavily dependent on weather and ice conditions. Our experienced captain and expedition leader decide the itinerary and continually adjust plans as conditions and opportunities warrant. We take advantage of long daylight hours to exploit every opportunity to experience excellent wildlife viewing, amazing scenery, and excursions via Zodiac.

The Antarctic Peninsula region contains some of the world's most impressive scenery and some of Antarctica's best wildlife viewing opportunities. Protected bays and narrow channels are surrounded by towering mountain peaks covered in

permanent snow and immense glaciers. Icebergs of every size and description complete an image of incomparable beauty. Waters rich with krill are home to a variety of whale and seal species. The whole area is alive with penguins foraging at sea and forming large nesting colonies at special places on land. The area is also home to Antarctic research stations of various nationalities. Some stations have a gift shop and post office.

The South Shetland Islands are the northernmost islands in Antarctica and will likely be our first sighting of land. This wild and beautiful island chain contains numerous landing sites with abundant wildlife and historical significance. Among them is Deception Island, where the flooded caldera of an active volcano harbors an abandoned whaling station.

Farther south, on the Antarctic Peninsula, the vast Gerlache Strait area contains sheltered bays, accessible wildlife, and stunning scenery. Places with names like Paradise Bay are the epitome of everything Antarctic: glaciated mountains, towering icebergs, feeding whales, seals on ice floes, and bustling penguin colonies.

At the southern end of Gerlache Strait is the famous Lemaire Channel, also known as “Kodak Gap” because of the photogenic way the mountainous sides of the narrow channel are reflected in calm waters strewn with icebergs.

Our days in Antarctica are filled with memorable excursions, sumptuous meals, presentations by our experts, and enough incredible scenery and wildlife to fill your camera and overwhelm your emotions.



Day 9-10: Back across the Drake Passage

After our amazing time in Antarctica we cross back north through the bountiful waters of the Drake Passage. Presentations and workshops by our expert staff, as well as our range of onboard recreation facilities, ensure that these days at sea are not idly spent. This is also the time for our End of Voyage ceremonies including slideshow and farewell dinner.



Day 11: Disembarkation in Ushuaia, Argentina

After breakfast we say farewell in the city of Ushuaia, where we started. We provide a group transfer to the airport or to the town center if you wish to spend more time here. As you look back on your wonderful experience in Antarctica, you may already be looking forward to your next incredible adventure to the ice!

M/v Sea Spirit

DECK PLAN M/V SEA SPIRIT

- Owner's

Premium

Deluxe

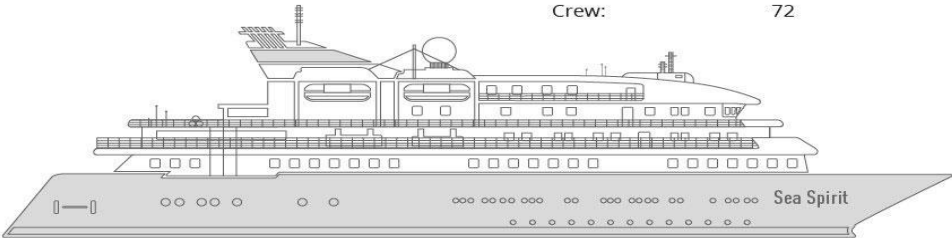
Superior
- Classic

Triple

Main Deck

Length:	90.6 meters (297 ft.)
Beam:	15.3 meters (50 ft.)
Speed:	15 knots
Passengers:	114
Crew:	72

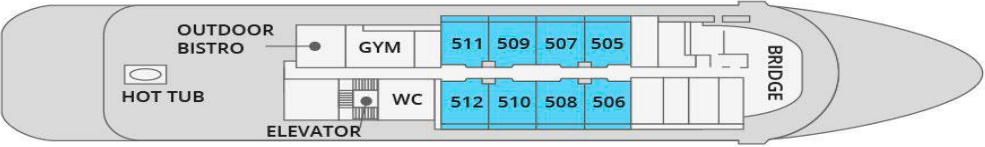
- SUN DECK
- SPORTS DECK
- CLUB DECK
- OCEAN DECK
- MAIN DECK



SUN DECK



SPORTS DECK



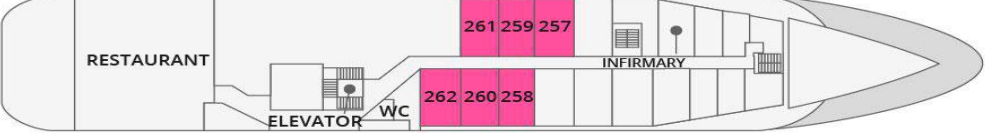
CLUB DECK



OCEAN DECK



MAIN DECK



Triple Classic



Averaging 21 square metres/226 square feet, these staterooms have two twins and a comfortable sofa bed. The twins also convert to a King, if desired. Located on Oceanus Deck, these suites have a picture window, two wardrobes and en suite facilities. Amenities include: in-room safe, refrigerator, satellite telephone access, TV/DVD, individual temperature control, and hair dryer.

Classic Suite



Averaging 21 square metres/226 square feet, these cabins are located on the Oceanus Deck. They feature a picture window, two wardrobes and a choice of either two twin beds or a King Size bed. Amenities include: en suite facilities, in-room safe, refrigerator, satellite telephone access, TV/DVD, individual temperature control and hair dryer.

Main Deck Suite



Averaging 23 square metres/248 square feet, Main Deck cabins are equipped with either two twins or a King Size bed. They are located on the Main Deck with a minimum of two portholes for exterior views. Amenities include: en suite facilities, in-room safe, refrigerator, satellite telephone access, TV/DVD individual temperature control and hair dryer.

Superior Suite



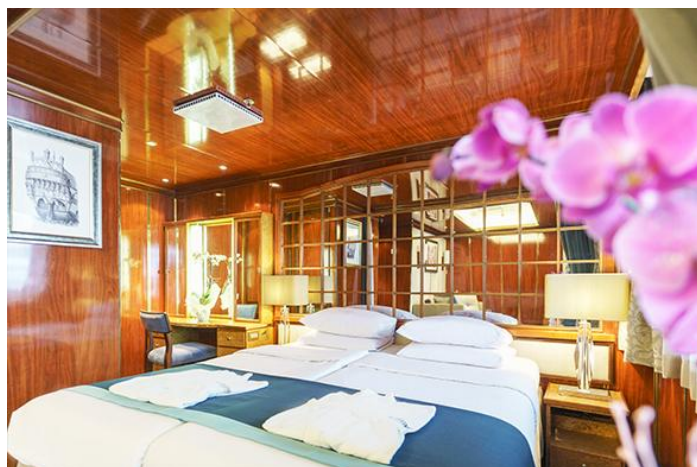
Superior Suites are located on the Club Deck. Averaging 20 square metres/ 215 square feet, these cabins feature two twin beds or a King Size bed. The picture window overlooks an outside walkway on the Club Deck. Amenities include: en suite facilities, walk-in closet or wardrobe, in-room safe, refrigerator, satellite telephone access, TV/DVD, individual temperature control, hair dryer.

Deluxe Suite



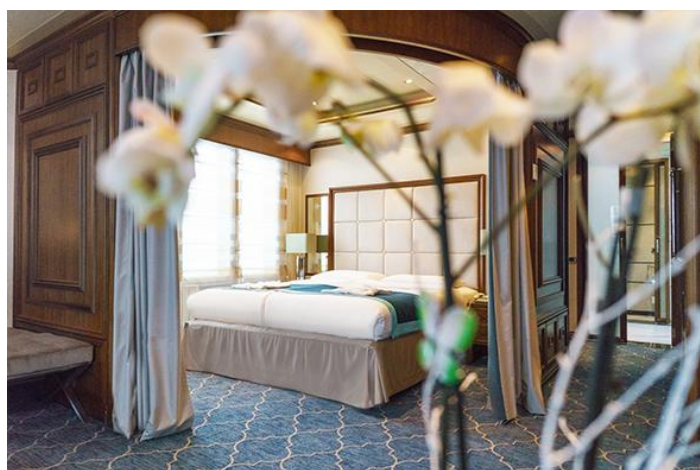
The Deluxe Suites with balconies are located on the Sports Deck. Averaging 24 square metres/ 258 square feet means plenty of room. Choose from either two twin beds or a King Size bed. A sliding glass door leads to a private balcony. These suites feature a walk-in closet or wardrobe. Amenities include en suite facilities, in-room safe, refrigerator, satellite telephone access, TV/DVD, individual temperature control, and a hair dryer.

Premium Suite



The Premium Suites are located on the Sun Deck. Averaging a generous 30 square metres/ 323 square feet, with two twin beds or a King Size bed. Access the private balcony by a sliding glass door. Amenities include: en suite facilities, lounge area, in-room safe, refrigerator, satellite telephone access, TV/DVD, individual temperature control, and hair dryer.

Owners Suite



Super-spacious (43 square metres/ 463 square feet) elegant suite on the Sun Deck. Designed for entertaining, the Owner's Suite has a separate living room with game and meeting area. A BOSE stereo system provides background music, or watch videos on the HD plasma TV. Sliding glass doors lead to a private deck. Refresh in the jetted bathtub in en suite facilities. Slumber in the King Size bed. A sofa bed can accommodate a third person.



Sea Kayak Club

Kayaking fee for Antarctic cruises 2018/19:

795 USD on Antarctic Peninsula voyages

895 USD on South Georgia and Falkland Islands voyages

Antarctica is a paddlers' paradise. The White Continent boasts some of the world's most impressive landscapes and is home to incredible marine wildlife. Sea Kayak Club members will have the opportunity to paddle through tranquil waters filled with glittering icebergs and porpoising penguins while surrounded by magnificent glaciers and mountains.

The protected and picturesque waters of the Antarctic Peninsula offer the best sea kayaking opportunities in Antarctica. Sea Kayak Club is also offered on selected voyages to South Georgia, where members may have the rare opportunity to encounter the island's legendary abundance of wildlife from a kayaker's perspective, if the area's notoriously inclement weather permits.



Camping

Camping fee for Antarctic cruises 2018/19:

285 USD

If you're looking for an unforgettable way to expand your experience on the White Continent, then Antarctica Camping may be the perfect choice for you. This optional activity is your unique opportunity to meet Antarctica on its own terms by spending a night out on the snow and ice!

Camping is a great way to immerse yourself in Antarctica. As the sun slowly sets you can unwind and let your senses fully absorb the awesome sights and mysterious sounds of this legendary wilderness. Spend an hour - or all night - simply watching the drama of endlessly changing light upon the landscape. Build a snowman or capture that perfect photo. Whatever joy Antarctica holds for you, you can take the time to experience it fully on your Antarctica Camping night. Gain lasting memories, undeniable bragging rights, and a new appreciation for your warm bed back on the ship.

Please contact our office for availability.



Photography

Free option

The Polar Regions are perhaps the most photogenic on earth, with countless beautiful scenes presenting themselves every day. Endless expanses of ice, beaches crowded with seals or penguins, sunsets over unbroken horizons, starlit skies, and even the majestic northern lights – they all present fantastic photographic opportunities – and in order to make sure that you come home with some spectacular images we offer you the chance to learn and practice your photography alongside an experienced professional.

Our expert Photographer will be on hand to answer your questions and give advice, both in the form of on-board lectures and workshops on shore. Explore the key elements of photography in a fun and relaxed setting, with plenty of

opportunities for questions and feedback. Learn how to see light in a new way and experiment with the techniques of composition and framing.

Rates

Sailing Date	Triple Classic	Main Suite Deck	Classic Suite	Superior Suite	Deluxe Suite	Premium Suite	Owners Suite
26 Nov 2018	\$6.495	\$7.295	\$8.195	\$8.595	\$9.195	\$9.895	\$12.795

Rates Include

- 1 pre-voyage hotel night in Ushuaia;
- Group transfer to the ship on day of embarkation;
- Shipboard accommodation;
- All meals on board throughout the voyage;
- Tea and coffee station 24 hours daily;
- All scheduled landings/excursions (subject to weather and ice conditions);
- Leadership throughout the voyage by our experienced Expedition Leader and Expedition Team;
- Branded Poseidon Expeditions parka;
- Rubber boots for shore landings for the time of the cruise;
- Welcome and Farewell cocktails;
- All port fees;
- Group transfer to airport or central location upon disembarkation;
- Pre-departure materials;
- Digital Voyage Log;

Rates Do Not Include

- Airfare;
- Visa and passport fees (if applicable);
- Luggage and trip cancellation insurance;
- Soft drinks and alcoholic beverages other than those for special events and celebrations;
- Personal expenses such as laundry and onboard communication (telephone calls, faxes, and e-mail service);
- Fuel surcharge may be applied for all bookings;
- Emergency Evacuation Insurance to a minimum benefit of USD 200,000;
- Staff gratuities;
- Pre- or post-cruise travel expenses.

Terms and Conditions – Expedition Cruises to Antarctica aboard “Sea Spirit”

Rates – Voyage rates are quoted in U.S. dollars/EURO and are based on passengers sharing a cabin. Rates for all Poseidon Expeditions voyages are based on anticipated fuel costs at the time of departure multiplied by a maximum daily usage. There will be no fuel surcharge for voyages aboard Sea Spirit if the price of applicable fuel, delivered locally, does not exceed USD 1,150 per metric ton. Should the price go above this a surcharge, to cover only the increase in fuel costs, may apply. In this case agents will be notified immediately and passengers will have the right to cancel their reservations within 14 days of notice of increase without penalty.

Reservations – To confirm a booking a deposit of 20% of the published rate per person is required. Final payment is due in full 90 days prior to departure. Within 90 days of departure, full payment is required to confirm a booking.

Payments – All payments are to be made in US dollars/EURO. Payments are made via bank transfer.

Booking Cancellations / Refunds – All cancellations must be received in writing. Reservations cancelled more than 120 days prior to departure are subject to a USD 750/EURO 575 per person cancellation fee. Reservations cancelled from 120 to 91 days prior to departure are subject to 20% per person cancellation fee. Reservations cancelled 90 days or less prior to departure are subject to full fare forfeiture.

Voyage Cancellation – In the very unlikely event that a Poseidon Expeditions' voyage is cancelled prior to departure Poseidon Expeditions will provide a full refund of all funds paid to Poseidon Expeditions. Should a voyage cancel while in progress, Poseidon Expeditions will provide a pro-rated refund of the funds paid to Poseidon Expeditions.

Transferred reservations/name changes – Bookings transferred from one departure (more than 90 days prior to departure) to another, for the same passenger can be made at no charge, based on availability. By direct permission, and on a limited basis, name changes on a reservation can be made at a fee of USD 300/EURO 220 per person.

Inventory and Service

Upgrades – Periodically to maximize available inventory, passengers may be upgraded into higher level cabins. These unsolicited upgrades are made at no charge, however open inventory in upper level cabins is only filled on an unsolicited basis when needed to secure reservations in other categories. In any event no upgrades will be made without prior notification.

Single supplements – Single occupancy of a twin cabin is available at 1.7 times the twin rate and available only in Main Deck and Classic Suites; single occupancy of a twin cabin is available at 2 times the twin rate in the Superior, Deluxe, Premium and Owner Suites. Cabin share is available only in the following categories: Triple Classic, Main Deck and Classic Suites.

Children – In general, our policy is that children must be at least 12 years of age to participate in a Poseidon Expeditions voyage. However, we may on a case by case basis accept children ages 8-11 with additional screening.

Onboard language – All voyages are conducted in English and German. For groups of passengers speaking other languages Poseidon Expeditions recruits multi-lingual staff members, who assist the passengers during briefings and lectures. Staff varies from voyage to voyage, please check when booking.

On board authority – All passengers are subject to instructions or regulations given by the Captain or the Expedition team.

On board payments – All payments are in US dollars. Passengers may run a tab which must be paid prior to disembarkation. Payments can be made in cash or via CC.

Itineraries – Poseidon Expeditions' captain and expedition team will do everything possible to complete the voyage as outlined in the voyage itinerary. However itineraries (including all scheduled landings and excursions) in Polar Regions are heavily dependent on weather and ice conditions. Occasionally conditions and or safety concerns require itinerary changes. The Captain and expedition team will accordingly make every effort to find the best alternative to the original itinerary while keeping passengers informed and updated. Itinerary changes are not subject to passenger approval/consent and in the event of such a change no refunds or price adjustments are possible. Placement of a booking with Poseidon Expeditions amounts to an acknowledgement that itinerary changes are possible.

Photography / Video – Poseidon Expeditions reserves the right to use photographs and/or videos taken during the operation of the voyage for promotional purposes for the company and/or its sales agents. Passengers who prefer that their images not be used are asked to identify themselves to Poseidon Expeditions and its agent, prior to embarkation.

Smoking – There is no smoking inside the ship. There will be a designated smoking place outside in a sheltered area.

Alcohol – Alcohol is available for sale in our bar. Poseidon Expeditions reserves the right to refuse alcohol to anyone deemed to be intoxicated.

Pre-departure forms / requirements

Eligibility – There are no specific physical requirements for travel in Antarctica. However we are traveling to the remote region of the world and we are traveling on a ship which, at times, may be in rough seas. Passengers with certain medical/health issues may not be appropriate for this type of expedition and are advised to exercise appropriate caution. Our medical information form lists a number of these conditions.

Pre-departure forms – Prior to boarding, specific passenger information is required not only for passenger safety, but for international reporting regulations. Required information must be completed in the forms provided by Poseidon Expeditions and in our possession at least 60 days prior to departure. Final documents cannot be issued for passengers whose information has not been received.

Passenger Medical Information – We require all passengers to submit basic medical information prior to departure. Upon receipt of that basic medical information, specific physical conditions may necessitate additional documentation from a passenger's physician certifying fitness to travel on a voyage to Antarctica. If additional medical confirmation is requested, boarding will not be allowed absent receipt of that confirmation. Poseidon Expeditions has a pregnancy policy that women are welcome with explicit doctor's permission and having signed a specific waiver. Pregnancy policies of carriers (ship owners, airlines, bus companies, hotels, etc) may also apply. Please note that medical information will, of necessity, be available to designated Poseidon Expeditions staff.

Please note that regardless of general eligibility there may be instances where environmental conditions require a level of fitness/mobility. In these cases individual participation in the landing(s) in question may be restricted by the Captain, Expedition Leader, or ship's doctor.

Travel Insurance – All passengers are required to carry valid travel insurance. This insurance must contain medical and evacuation coverage and should include cancellation and trip interruption as well. As any potential evacuation from Antarctica can cost up to \$150,000 we recommend that no policy carry less than this amount of coverage. As part of the pre-departure forms Poseidon Expeditions will require information as to carrier, policy number, and a 24-hour contact number.

Pre-departure Assistance

All prices quoted are for cruise only. Our ground agents can assist with arrangements for additional hotel nights, private transfers and land excursions.

Responsibility – The payment of a deposit or full payment for a reservation on this tour shall constitute consent to all the provisions contained herein.

Poseidon Expeditions or its agents are not responsible for any costs or penalties relating to air transport or other services that are cancelled. Poseidon Expeditions is not liable for failure to provide the services or accommodations offered to the extent that such services or accommodations cannot be provided due to force majeure or other circumstances beyond its control.

Poseidon Expeditions is a qualified tour operator that organizes and administers its polar voyages. Poseidon Expeditions will provide services in conjunction with local operators and air and sea operators. The designated operator(s), in turn, acts only as an agent for any transportation carrier, hotel, ground operator, or other suppliers of services connected with these tours ("other providers"), and the other providers are solely responsible and liable for providing their respective services. The passenger tickets in use by the carriers shall constitute the sole contract between the carriers and the passenger; the carriers are not responsible for any act, omission, or event during the time participants are not aboard their conveyances.

Poseidon Expeditions and its designated service providers shall not be held liable for (A) any damage to, or loss of, property or injury to, or death of, persons occasioned directly or indirectly by an act or omission of any other provider, including but not limited to any defect in any aircraft, watercraft, or vehicle operated or provided by such other provider; and (B) any loss or damage due to delay, cancellation, or disruption in any manner caused by the laws, regulations, acts or failures to act, demands, orders, or interpositions of any government or any subdivision or agent thereof, or by acts of God, strikes, fire, flood, war, rebellion, terrorism, insurrection, sickness, quarantine, epidemics, theft, or any other cause(s) beyond their control. The participant waives any claim against Poseidon Expeditions for any such loss, damage, injury, or death. In the event of Itinerary change due to any unforeseen circumstances or due to force majeure Poseidon Expeditions is not to be held liable for any costs incurred by passengers in this case and no refunds or price adjustments are possible.

By registering for a Poseidon Expeditions voyage, the participant certifies that he/she does not have any mental, physical, or other condition or disability that would create a hazard for him/herself or other participants. Poseidon Expeditions and its designated tour operator reserve the right in their sole discretion to accept, decline to accept, or remove any participant from a voyage. Poseidon Expeditions reserves the right, without penalty, to make changes in the published itinerary whenever, in their judgment, conditions warrant, or if they deem it necessary for the comfort, convenience, or safety of participants.

Passengers are not permitted to bring or have onboard any pets or animals, firearms, flammable or hazardous items, controlled or prohibited substances or drugs, contraband or items prohibited by any country or port to be visited.

Baggage and personal effects are at all times the sole responsibility of the participant.

Resolution of disputes – This agreement is subject to applicable UK law. Any controversy or claim arising from/or relating to a Poseidon Expeditions voyage shall be resolved by binding arbitration at the Arbitratory Court in London. Acceptance of the initial services to be provided on the trip shall constitute an acceptance by the trip member of these terms and conditions. On advancement of deposit to Poseidon Expeditions, the depositor therefore agrees to be bound by the above recited Terms and Conditions.

Please read – By purchasing this product you accept the above Terms and Conditions. In case you disagree to any of the Terms and Conditions of Operator you will not be able to take part in the expedition cruise.